



SEATTLE

ELEVATOR

— ELEVATING THE WORLD FOR BETTER TOMORROW! —



A Promise of safety & comfort in a budget

About Us

Seattle Elevators is being managed and supervised by Mr. Smit Shah, who has been serving in this industry for manufacturing & installation since many years. We are one of the leading and accomplished companies in the production and installation of elevators in the market today. We have superior knowledge based team for elevator installation specialized in electrical, mechanical and design side. Our head office is situated in Ahmedabad, and we are serving in elevator industry for pan India.

At Seattle Elevator, we aim to provide a lift for every need. Our standard process is to understand the actual need of customer and from that we apply our best knowledge and we give them the best solution for elevator. We are committed to give our customers to provide best sales & after sales service with very affordable price. We are always ready to accept customized types of projects of elevators for Normal Passenger lifts, Industrial Lifts, Goods Lifts, Hospital Elevator, Dumbwaiter Elevator, Kitchen Lifts, etc.



Our Vision :

To create new, smart and easy elevator system to make the world's building and cities safer, more efficient, more sustainable, more comfortable every day, and to be Your First Choice. We will inspire our customer's total confidence through exceptional service that earns us 100 % of their business, 100 % of the time.

Our Vision is to ELEVATING THE WORLD FOR BETTER & SAFER TOMORROW!



Our Mission :

To achieve the highest level of quality with a great degree of efficiency in safety, comfort and to exceed customer expectation, to be one among the global leaders. As our slogan is Choose the right partner to rise high we want to accomplish higher-value projects and walk higher with clients.

"Our Mission for world-class, customer-centric, service-oriented company"





Traction elevators are most running & proven technology in elevator history. This technology is major running technology for mid-rise to high rise residential & commercial buildings all over the world. It consists electric motor with geared or gearless along with hoisting cables for vertical traveling. Generally, machine room will be there in MR Traction elevator as per the Indian standards. Most considerable point of traction elevator is that it saves energy due to counter balancing effect for upward & downward direction and it results to save the cost in long travel. Traction elevator is the most reliable & cost-effective elevator technology and which is suitable for all the types of buildings. And the design of this technology is very flexible due to easy installation process. After installation it is also economical & reliable for the maintenance, too.



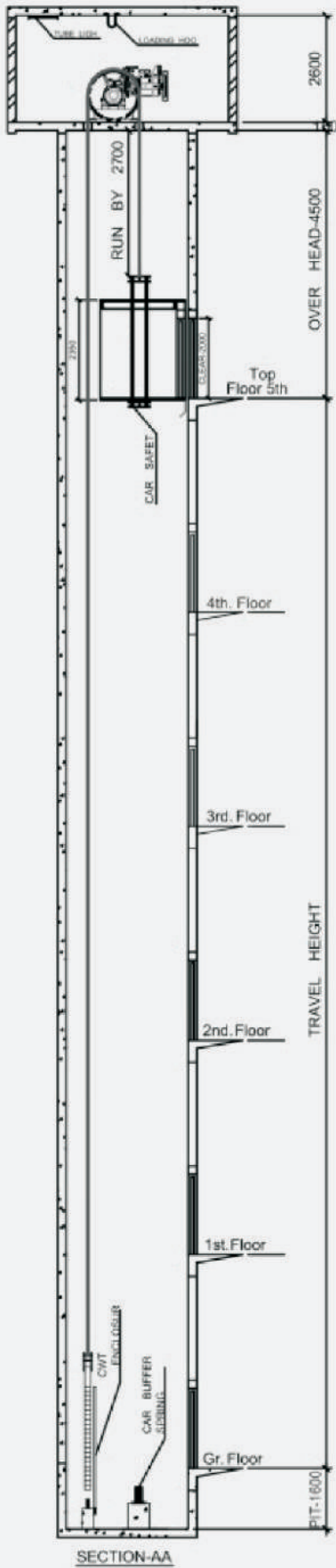
MR TRACTION ELEVATOR



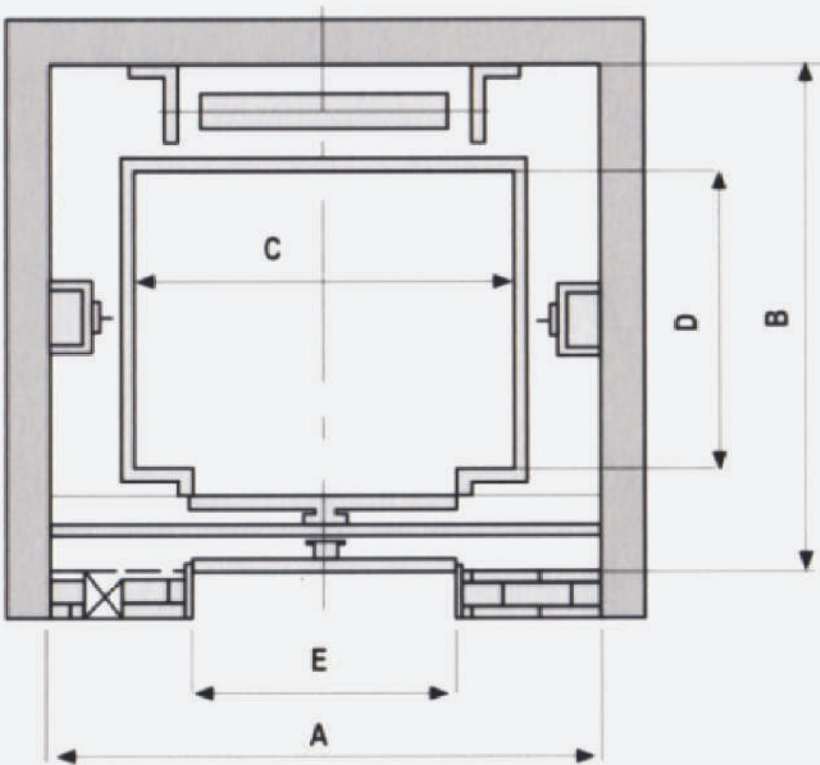
HOISTWAY MACHINE ROOM SIZE
TRACTION LIFT WITH AUTO DOORS

LOAD		LIFT WELL		CAR INSIDE		ENTRANCE	MACHINE ROOM			UP TO 1.5 M/Sec.		UP TO 2.5 M/Sec.	
PERSON	WEIGHT	WIDTH	DEPTH	WIDTH	DEPTH		WIDTH	DEPTH	HEIGHT	PIT	O.H.	PIT	O.H.
IN KG.		A	B	C	D	E	F	G	H	K	M	K	M
6	408	1900	1650	1100	1100	800	3000	2500	2500	1600	4800	2600	6700
8	544	1900	1900	1300	1100	800	3200	3500	2500	1600	4800	2600	6700
10	680	1900	2000	1350	1300	800	3500	4000	2500	1600	4800	2600	6700
13	884	2500	1900	2000	1100	1000	4000	4200	2500	1600	4800	2600	6700
16	1088	2500	2000	2000	1300	1000	4500	4800	2500	1600	4800	2600	6700
20	1360	2500	2300	2000	1550	1000	5000	5000	2500	1600	4800	2600	6700

HOISTWAY ELEVATION DRAWING

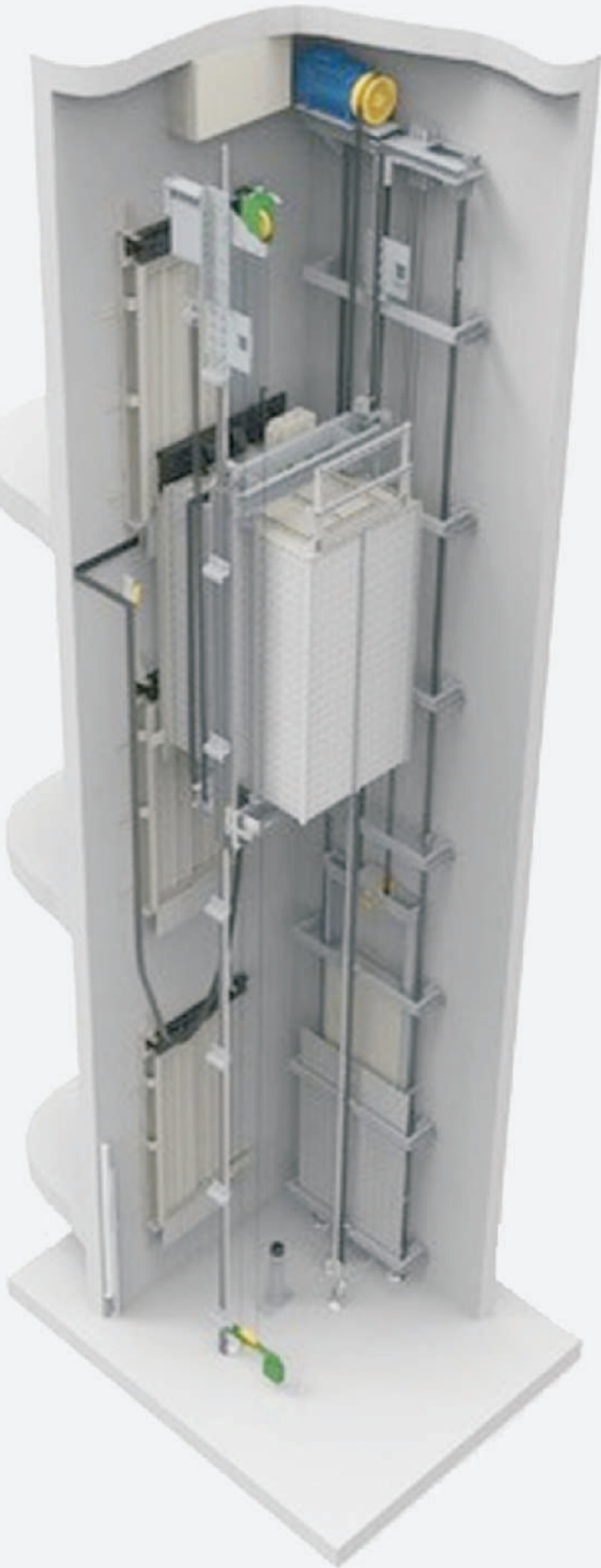


HOISTWAY PLAN



As per the name these types of lifts don't require machine room. In this technology, the traction motor can be fixed in the hoist way itself. MRL Elevator is growing technology in India. MRL elevator generally use Gearless motor for lifting the cabin. And this technology is designed & built for the modern buildings to save space of machine room. This design is also providing high speed vertical travelling. It can be easily installed in very small bungalow or low rise to high rise building.

MRL ELEVATOR

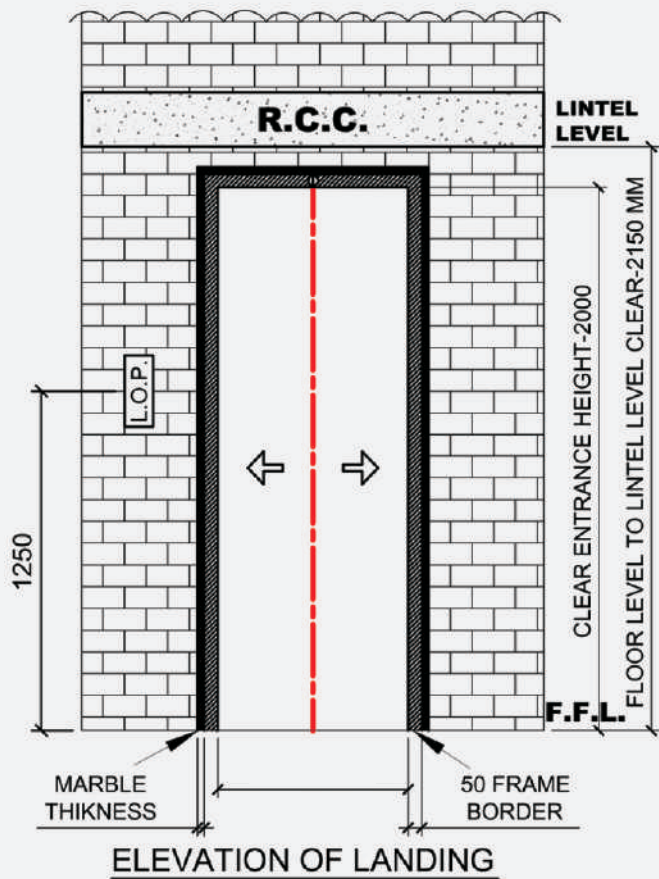
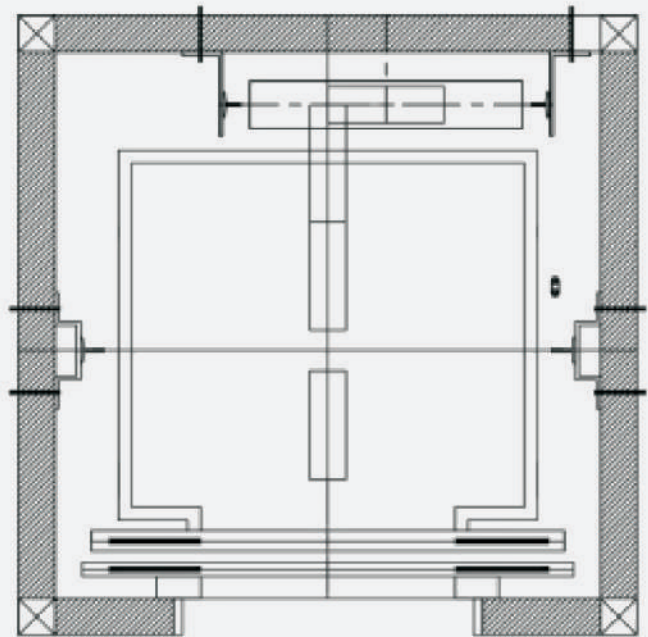
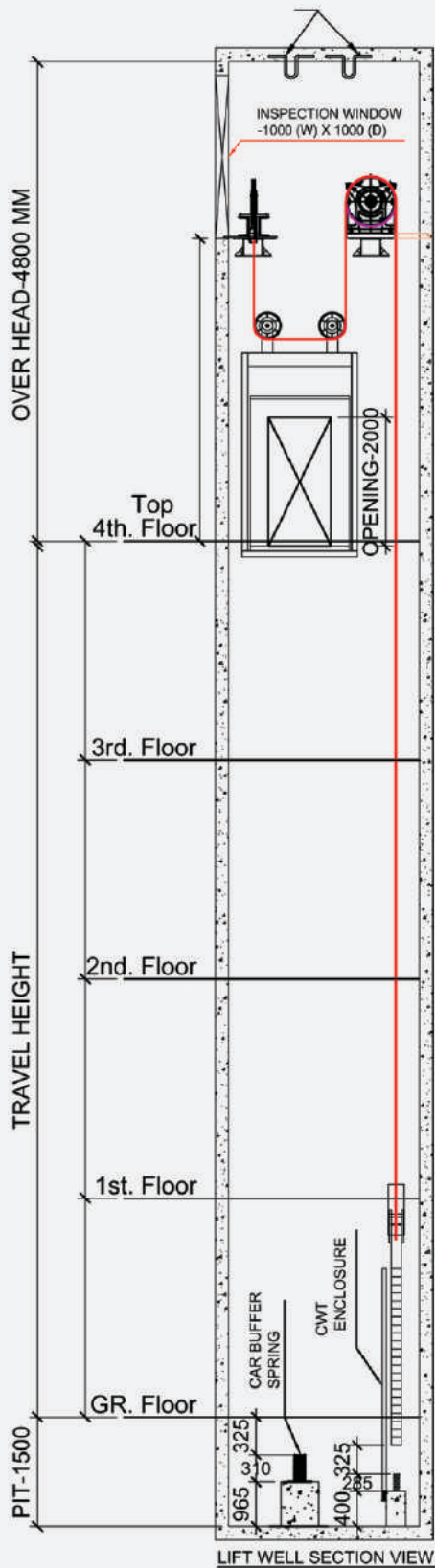


KEY POINTS

- Saves building space
- Saves building electricity for up to 70%.
- Uses no oil
- Saves overall construction cost
- Designed for small & medium sized building
- Less Fire risks
- Modern & aesthetic look
- High Speed travelling
- Low maintenance motor
- Noise less travelling
- More efficient & safer design
- VVVF Drive based control system
- Smooth & jerk less ride
- Very less wear & tear

Modern Building Design

As this elevator is gearless & room less, it allows the building to be free from unsightly construction on the roof. This elevator can be installed in Wall as well as fabricated structure. So it can be easily installed in inside or outside the building. This uplifts the look of the building majorly. Hence, it's very flexible & adaptable. This design is majorly first choice of all the architects as this is the modern & flexible design. Very comfort & safe riding of elevator is the major advantage of this technology



HYDRAULIC
ELEVATOR

A hydraulic elevator works by pressurizing hydraulic fluid with an electronic pump and forcing it into a cylinder. The pressure created pushes a piston that moves the elevator upwards. To lower the elevator, this functions in reverse with pressure decreasing, lowering the elevator cabin. Generally, the hydraulic elevator is used where overhead space is not available. Hydraulic elevator is most suitable for low rise building with less hoist way space is available. Counterweight device is not needed in this lift for balancing, which increases the utilization rate of the hoist way and greatly saves the construction space & cost.



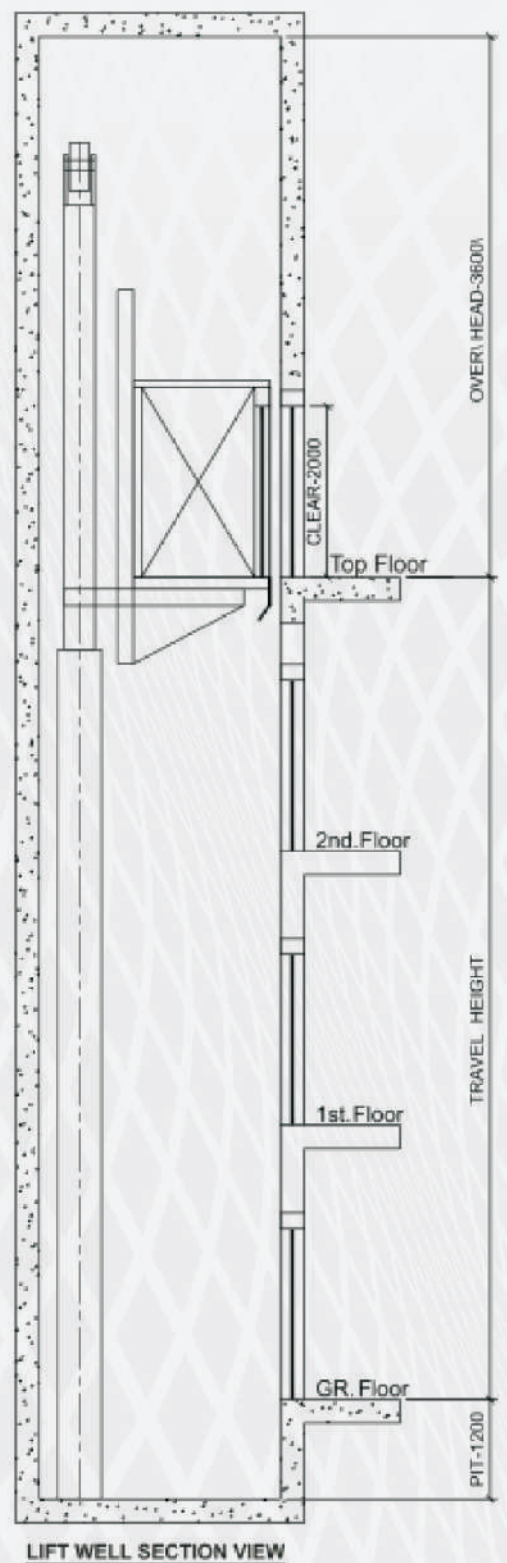
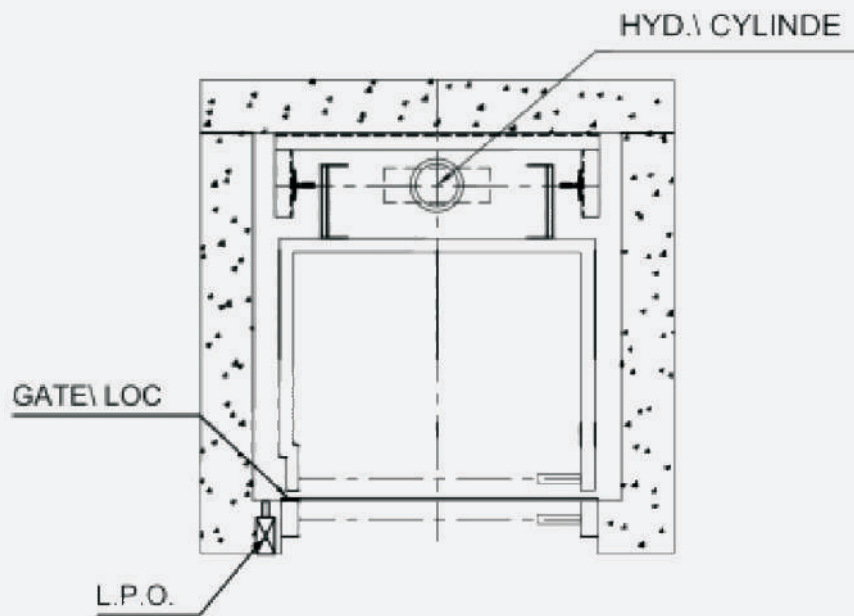
Hydraulic Goods Cum Passangers Lift
with Indirect System

Capacity (kg)	Car Size		Lift Shaft Size		Lift Shaft Size		Door Opening
			One Side Opening		Two Side Opening		Collapsible Imperforated
	A	B	C	D	E	F	G
500	1100	1200	1850	1500	1850	1400	850
750	1300	1500	2050	1800	2050	1700	1000
1000	1400	1800	2150	2100	2150	2000	1100
1500	1700	2000	2450	2300	2450	2200	1350
2000	1700	2500	2450	2800	2450	2700	1350
2500	2000	3000	2750	2800	2750	2700	1575
3000	2000	3000	2750	3300	2750	3200	1575
4000	2500	3000	3250	3300	3250	3200	2000
5000	2500	3600	3250	3900	3250	3800	2000

Note : All Dimensions are in mm.

Can be Customized as per requirements.

Major advantage of hydraulic elevator is it consume less space and less power. When the lift is going downwards, depending upon the work done by the cabin's own weight, no electricity is consumed. This design is the safest design in elevator as it is working on hydraulic fluid pressure. There's no chance of free fall accident because it's not travel only with rope, but it travels on piston cylinder system. And there are additionally safety valve to prevent the accident of elevator.



Seattle Elevator is providing very wide range of goods elevator for all the type of industries from small scale to large scale. We provide very durable, sturdy and lifelong design especially for goods elevator. In this design we shall provide MR, MRL, Hydraulic, Drum type traction type of elevator. A goods lift can simplify and almost eliminate the tedious process of carrying heavy goods from one place to another, making it almost effortless. We have various specialties in goods lifts like fire proof, sand proof, bird proof etc. We have also various range of clear opening is available in auto & manual both.

GOODS
ELEVATOR



LOAD	CAR INSIDE		HOIST WAY SIZE		Cabin Area	ENTRANCE
kg	A	B	W	D	In Sq. meter	E
500	1100	1200	1850	1550	1.32	1100
1000	1400	1800	2200	2150	2.52	1400
1500	1700	2000	2600	2350	3.40	1700
2000	1700	2500	2600	2850	4.25	1700
2500	2000	2500	2900	2850	5.00	2000
3000	2000	3000	2900	3350	6.00	2000
4000	2500	3000	3400	3350	7.60	2500
5000	2500	3600	3400	3950	9.00	2500

- Table is only for the reference considering the standard size. It may vary as per the site for different requirement.

Dumbwaiter or Drum type traction lifts are one of the part of goods lift which can be easily installed in very less space. Application of Dumbwaiter or Drum type traction lift is mostly at Hotels, Hospitals, Restaurants, Bar-Café, Stores, Showrooms, Manufacturing Industries, etc. We have various range of dumbwaiter from 50kg load to 5000kg load capacity. Generally these lifts are designed for transportation of different types of goods for vertical travel.



DUMB WAITER
ELEVATOR

Standard sizes available are 50 kgs, 100 kgs & 250 kgs. For furthur technical assistance kindly contact us for details.



STANDARD DIMENSIONS FOR DUMB WAITERS

Load (kg)	Car Dim			Shaft Dim		Entrance (E)	M/C Room Dimns			Over Head	Pit Depth
	Width (A)	Depth (B)	Height (H)	Width (C)	Depth (D)		Width (K)	Depth (L)	Height		
100	700	700	800	1200	900	700	1200	1150	1800	3300	750
150	800	800	900	1300	1000	800	1300	1150	1800	3300	750
200	900	900	1000	1400	1100	900	1400	1150	1800	3300	750
250	1000	1000	1200	1500	1200	1000	1500	1200	1800	3300	750

• Table is only for the reference considering the standard size. It may vary as per the site for different requirement

Key Points :

- Less space required as no need of counter weight
- Standard speed is 0.15 to 0.30 m/s
- Easily installed from 10 feet 300 feet travelling height
- Different load & speed can be available as per the customize requirement especially for industries
- Noise free & jerk less operation especially for vertical travel of food item in kitchen lift

GEARED MACHINE

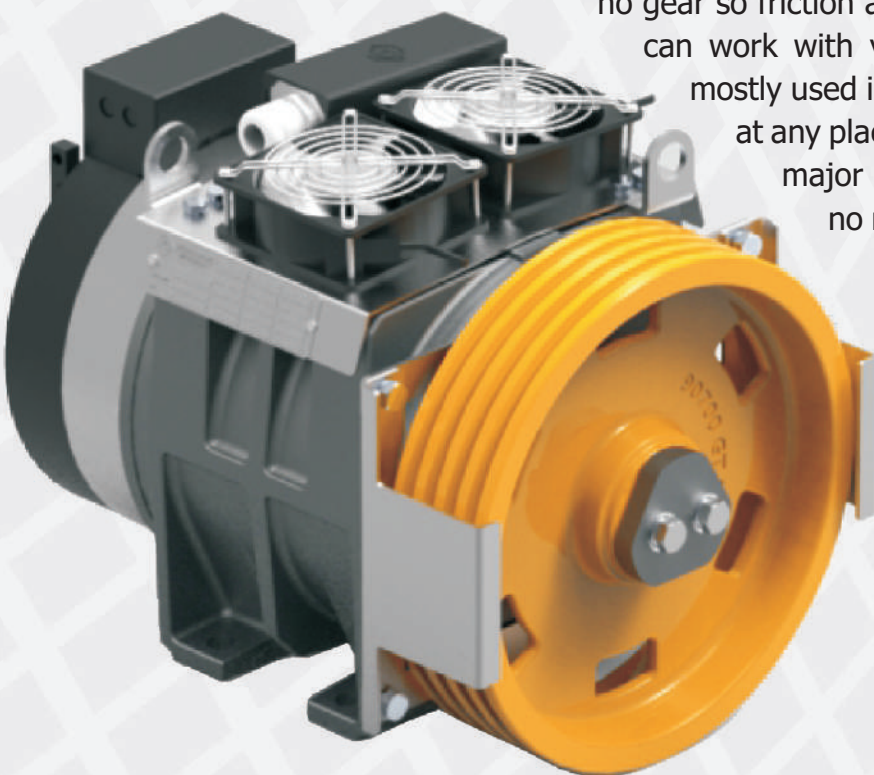
Geared machines are generally used for Machine room type traction elevator. We provide best suitable geared machine for various range of lifting load. We use only worm reduction safety gearbox for lifting the load. We used PB2 material for gear wheel & hardened alloy steel for worm shaft. We have various range of geared machine from 4 to 30 passengers with 0.32 to 1.0 m/s speed. Our machines are as per the international standards and also running with very high efficiency. We also used standard gear oil for long lasting life of the geared machine. Main sheave of the geared machine is also made from special grade cast iron. So, our machine is very sturdy, efficient & noise free.



ELEVATOR MACHINE

GEARLESS MACHINE

As per the name there is no reduction gear is available in these machines. There's only motor with rare earth permanent magnets with highly efficient brake. The size of these machines is very compact compared to gear machines. As there are no gear so friction and losses of the machines are very less so it can work with very high efficiency. Gearless machines are mostly used in MRL traction design. It's very easy to install at any place either in machine room or in hoist way. The major advantages of gearless machine are there is no need of regular maintenance, energy efficient and very silent while running. We provide gearless machine for the capacity from 4 to 30 passengers with 0.50 to 2.5 m/s speed. Wear & tear of these machines are very low which increases its service life and limits the need for unexpected repairs.



Seattle elevator provides appropriate control system for the MR, MRL & Hydraulic elevator. We used integrated lift controller for elevator. It works with variable voltage and variable frequency which provides jerk less travel in elevator. And there are all the safety & additional features available in control system. It consumes less power and more suitable for smooth riding in elevator cabin.



**CONTROL
PANEL**



**LOP COP
PANEL**



**PUSH BUTTON
TYPE**



TOUCH PANEL

We provide wall mounted & box type lift operating panel with seven segment display as per the requirement. There are various models & designs available with us for push button & touch panels. We also provide security features like RF id tag, fingerprint sensor, passcode systems in panel.

At Seattle Elevator we have wide range of cabin designs available with us. We provide MS powder coated, SS, Designer cabins, etc. We have special design team to fulfill the special requirement of Architects & Interior designers. In Stainless steel cabin we have Hairline finish, Golden, rose gold, mirror finish, non-scratchable etc. There are so many designs of Car ceiling available as per the customized choice of customers. We mainly focus to fulfill the requirement of customers for design, ventilation, illumination etc.

**ELEVATOR
CABIN**



SS HAIR LINE FINISHED



SS DESIGNER CABIN

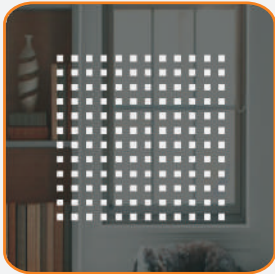


MS POWDER COATED CABIN



SS ROSE GOLD + DESIGN

**CABIN
CEILING**



**ELEVATOR
DOORS**



SS AUTO DOOR



TELESCOPIC DOOR



GLASS DOOR



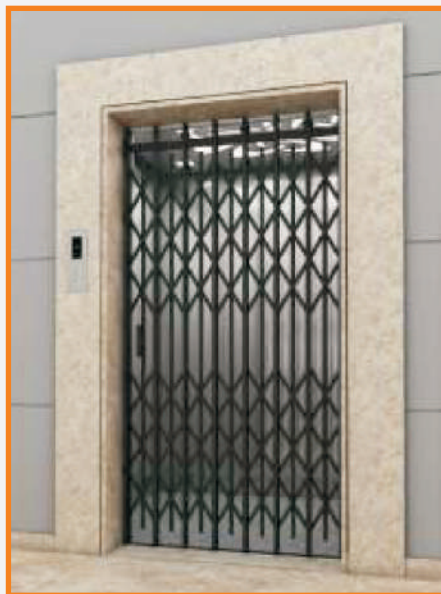
SMALL VISION AUTO DOOR



FULL GLASS DOOR



MANUAL TELESCOPIC DOOR



COLLIPSBLE DOOR



IFG DOOR



WORK OFFICE :

 C-16, Naroda GIDC Ph-1, Nr. Reliance, Naroda, Ahmedabad - 382330

 seatleelevator@gmail.com

 +91 97244 45696 - 94268 68178

 www.seatleelevator.com

- MRL PASSENGER LIFT
- GOODS LIFT
- TRACTION LIFT
- HYDRAULIC LIFT
- DUMBWAITER LIFT
- BUNGALOW – VILLA LIFT
- HOSPITAL LIFT
- HOME LIFT
- INDUSTRIAL LIFT